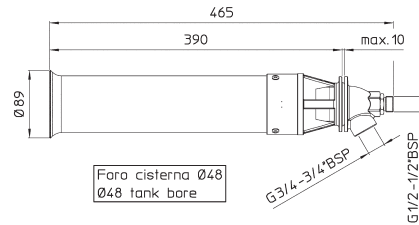
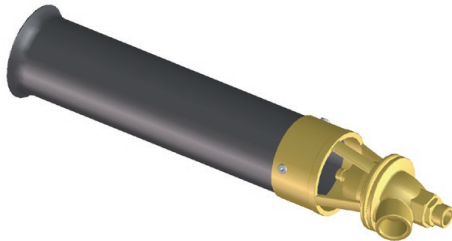




TURBOMIX



Standard con ugello in ceramica. Attacchi G1/2M. (circuitto ugello) e G3/4F. (circuitto ritorno pompa)

Pressione di esercizio max: 40bar
 Pressione di esercizio minima: 5bar collegando il ritorno in cisterna della pompa
 Peso: 1.3Kg

Materiali: PVC - ottone - allumina - tenute in NBR

Impiego: su atomizzatori e gruppi irroranti

Potenza di miscelazione superiore ai sistemi tradizionali. Consente di utilizzare la portata di ritorno della pompa per incrementare ulteriormente la resa in miscelazione durante le operazioni con sezioni di barra chiuse (manovra, fine corsa, riempimento serbatoio).

Standard with ceramic spray tip. 1/2" BSPM. (ceramic tip circuit) and 3/4" BSPF. (pump return circuit) connections

Max. operating pressure: 40bar / 580psi
 Min. operating pressure: 5bar / 73psi connecting return from pump
 Weight: 1.3Kg / 2.9lb

Materials: PVC - brass - ceramic - Buna N seals

Use: on airblast sprayers

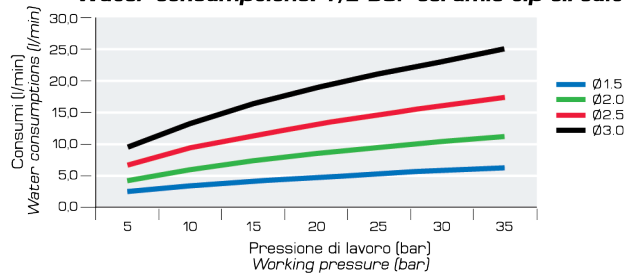
Superior mixing power than conventional systems. The by pass output from pump can be used to further increase mixing performances when booms are shut off (transition, end of row, tank filling).

COME SI ORDINA / HOW TO ORDER

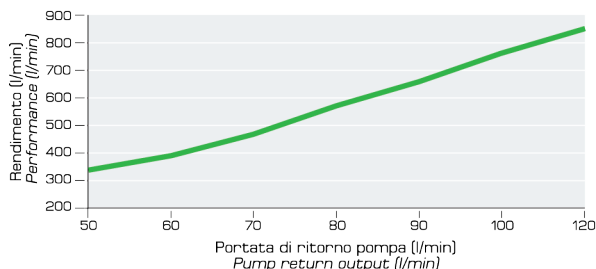
CODICE code	FORO UGELLO mm tip dia. mm
163.1004.13	1.5
163.1004.13 20	2.0
163.1004.13 25	2.5
163.1004.13 30	3.0

Consumi: Circuito ugello G1/2

Water consumptions: 1/2" BSP ceramic tip circuit



Rendimenti miscelazione: Circuito ritorno pompa G3/4
Mixing performances: 3/4" BSP pump return circuit



Rendimenti miscelazione: Circuito ugello G1/2
Mixing performances: 1/2" BSP ceramic tip circuit

