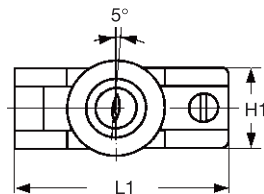
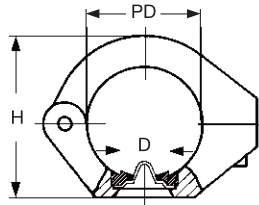


## ASSEMBLY ACCESSORIES

### ZPH



### FILTERPRESS CLAMPS

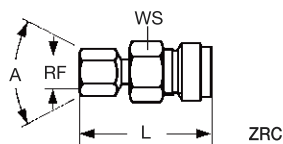
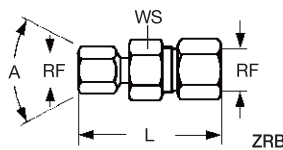
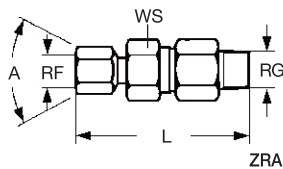
ZPH clamps have been specially designed to allow a fast and economic assembly of the clog resistant flat fan jet disc nozzles of the GE series. GE nozzles are the best solution to wash band filter presses. Thanks to its special design, the clamp lets the back part of the nozzle enter the pipe to enable the cleaning of the orifice by means of a rotating stainless steel brush.

Max working temperature	LT 80° C
Max working pressure	LP 7 bar
Fitting dimensions	Outer pipe diameter 50 mm
	Inner pipe diameter 47 mm
	Feed hole 19 mm

Materials	Clamp	D6	PP, chemically bonded fiberglass
	Pin, bolt	B3	AISI 316 stainless steel

Code	PD mm	D mm	H mm	H1 mm	L1 mm
ZPH 0150 D6	50	19	70	34	91

### ZRA



### SWIVEL JOINTS

ZRA swivel joints suit a wide range of nozzles keeping a functional pipe lay-out. Fitting and adjustment may be easily carried out tightening the hexagonal screw cap. A female thread meets the nozzle and a male threaded connection fits in the feed line.

Max working pressure	LP 21 bar
Materials	B31 AISI 316L Stainless steel
	T1 Brass

### ZRB/ZRC

This type of swivel joint can also be supplied with a female pipe connection (code ZRB) or a weld-on connection (code ZRC), with the same range as shown in the ZRA table beside.

Data Sheet for ZRB and ZRC types are available on request.

Code	RG poll	RF poll	L mm	A deg	WS mm	W g
ZRA 1212 xx SB	1/8	1/8	38	50	22	57
ZRA 2525 xx SB	1/4	1/4	57			75
ZRA 2626 xx SB	1/4	1/4	67	60	27	147
ZRA 3826 xx SB	3/8	1/4	67			150
ZRA 3838 xx SB	3/8	3/8	70			155
ZRA 5050 xx SB	1/2	1/2	74	40	27	186
ZRA 7575 xx SB	3/4	3/4	92		40	468