

ASSEMBLY ACCESSORIES

FLAT FAN JET QUICK-FIT SPOON NOZZLES

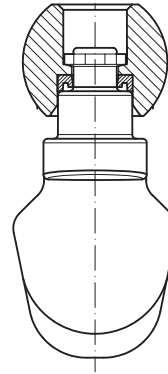
KS

A range of high impact moulded spoon nozzles is now available for all our pre-treatment nozzle clamps. The nozzles are connected to the specific sphere ZBA QQN1 D6 and equipped with a special seal that reduces pressure loss and avoids leakage, thanks to a new PNR patented quick-fit design. Their new design offers the ideal combination for a pre-treatment nozzle, a 60° spray angle and the highest possible impact for a given feed pressure, up to 60%, compared with a standard turbulence flat fan jet nozzle. Switch to greater efficiency in minutes!

Materials D6 PP, 25% glassfibers

| Code | Flow rate | | | | | lpm | Color | W g |
|---------------|-----------|------|------|------|------|-----|----------|--------|
| KSQ 2155 D6QQ | 6,2 | 7,4 | 8,8 | 10,8 | 12,5 | | Red | 23 |
| KSQ 2195 D6QQ | 7,8 | 9,2 | 11,0 | 13,5 | 15,6 | | Green | |
| KSQ 2230 D6QQ | 9,5 | 11,3 | 13,5 | 16,5 | 19,1 | | Blue | |
| KSQ 2270 D6QQ | 10,9 | 12,8 | 15,4 | 18,8 | 21,7 | | Sky blue | |
| KSQ 2337 D6QQ | 13,9 | 16,4 | 19,6 | 24,0 | 27,7 | | White | |
| KSQ 2390 D6QQ | 15,9 | 18,8 | 22,5 | 27,6 | 31,8 | | Orange | |
| KSQ 2410 D6QQ | 16,7 | 19,8 | 23,6 | 29,0 | 33,5 | | Pink | |
| KSQ 2433 D6QQ | 17,7 | 21,0 | 25,0 | 30,6 | 35,3 | | Brown | |

Pressure (bar) 0.5 0.7 1.0 1.5 2.0



QUICK RELEASE
COUPLING

FLAT FAN JET QUICK-FIT NOZZLES

With this complete range of flat fan jet nozzles, connected to the specific sphere ZBA QQN1 D6 and suitable for any existing PNR plastic swivel clamp, you can improve your machines design and reduce maintenance time at a negligible cost.

Product data-sheet is available for further details.

QUICK RELEASE
COUPLING

NEW PATENT
PENDING



HT

THREADED AND QUICK-FIT SPHERES

ZBA series are designed to meet male threaded metal nozzles and provide an extremely versatile nozzle combination system. Nozzles of different type, material, flow rate and spray angle can be fit to all our clamps receiving these threaded spheres. Threads are compliant with the European (BSP) and American (NPT) norms. The ZBA QQN1 D6 spheres are designed to meet our new series of quick-fit spoon and standard flat fan jet nozzles.

The next table shows the available connections and includes the blind sphere ZBA 0000 D5.

| Code | BSP inch | NPT inch |
|-------------|------------------|-------------|
| ZBA A025 D5 | 1/4F | |
| ZBA B025 D5 | | 1/4F |
| ZBA A038 D5 | 3/8F | |
| ZBA B038 D5 | | 3/8F |
| ZBA A039 D5 | 3/8M | |
| ZBA A050 D5 | 1/2F | |
| ZBA 0000 D5 | blind | |
| ZBA QQN1 D6 | Quick connection | |



ZBA