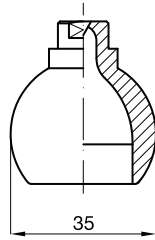


## ASSEMBLY ACCESSORIES

## HG/RG



HGQ 2195 D5



HGQ 2155 D5



HGQ 2270 D5



HGQ 1390 D5



RGN 2390 D5

## SWIVEL NOZZLES

This range of moulded nozzles with spherical connection is designed to fit ZLF, ZPF, ZPQ and ZPL/N clamps and are available with flat fan jet and hollow cone spray patterns.

A wider range of catalogue listed stainless steel nozzles can be assembled by means of the several moulded ZBA balls with female threads shown here below.

## FLAT FAN JET NOZZLES

A wide range of flow rates, from 3.3 to 33.5 lpm at 2 bar, together with a 60° spray angle, make the HGQ series nozzles the mostly preferred choice in pre-treatment plants.

HGQ nozzles are available moulded in high quality polypropylene.

Materials D5 Powder-filled polypropylene  
D6G PP, 25% glassfibers

Code	Flow rate lpm					Color	W g
HGQ 1390 xx	1,7	2,0	2,4	2,9	3,3	Black	16
HGQ 1770 xx	3,2	3,8	4,5	5,5	6,4	Violet	
HGQ 1980 xx	4,0	4,7	5,6	6,9	8,0	Brown	
HGQ 2117 xx	4,6	5,5	6,5	8,0	9,2	Yellow	
HGQ 2135 xx	5,5	6,5	7,8	9,5	11,0	Grey	
HGQ 2155 xx	6,2	7,4	8,8	10,8	12,5	Red	
HGQ 2195 xx	7,8	9,2	11,0	13,5	15,6	Green	
HGQ 2230 xx	9,5	11,3	13,5	16,5	19,1	Blue	
HGQ 2270 xx	10,9	12,8	15,4	18,8	21,7	Sky blue	
HGQ 2337 xx	13,9	16,4	19,6	24,0	27,7	White	
HGQ 2410 xx	16,7	19,8	23,6	29,0	33,5	Pink	

Pressure (bar) 0.5 0.7 1.0 1.5 2.0

## HOLLOW CONE NOZZLES

High flow rates and little risk of clogging are ensured by large free-passage X-vanes that make these nozzles the perfect choice for rinsing and treatment processes. A 50° spray angle offers high impact values at considerable distances, even at low feed pressures. Totally moulded in high quality polypropylene, they ensure low liquid absorption and resistance to high temperatures.

Material D5 Powder filled Polypropylene

Code	Flow rate lpm					Color	W g
RGN 2175 D5	7,1	8,4	10,1	12,4	14,2	Red	25
RGN 2215 D5	8,7	10,4	12,4	15,2	17,5	Blue	
RGN 2390 D5	15,9	18,8	22,5	27,5	31,8	Orange	

Pressure (bar) 0.5 0.7 1.0 1.5 2.0