

ASSEMBLY ACCESSORIES

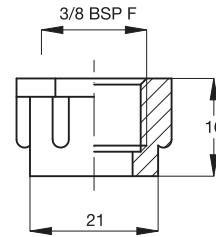
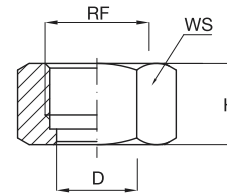
LOCKNUTS

VAA

VAA locknuts are designed to be assembled to our Z series nipples. They are available in stock in brass and stainless steel and can be supplied in any other machineable material on request. A top quality polypropylene retaining nut, highly resistant to water absorption, is available to fit 3/8 nipple and ZPB clamp outlets.

Materials	B1	AISI 303 Stainless steel
	B3	AISI 316 Stainless steel
	D6	PP, chemically bonded fiberglass
	T1	Brass

Code	RF inch	D mm	H mm	WS mm
VAA 0380 xxB	3/8	12,9	12	22
VAA 0381 xxB	3/8	12,5	15	22
VAA 0750 xxB	3/4	20,5	16	32
VAA 1250 xxB	1 1/4	32,5	27	50



VAA 0380 D6B

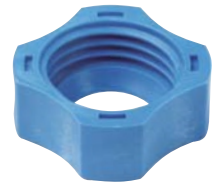
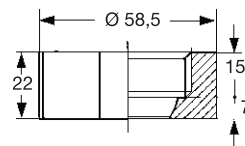
LOCKNUTS

VAB

The VAB 0125 D6 locknut is designed to be used on ZPF, ZPL, ZPN and ZPQ pipe clamps. Its special thread and external shape allow to assemble the cap by hand very easily without using tools, making maintenance activities easier and faster. The high quality plastic material has a very low water absorption, a high dimensional stability at different temperatures and a high tensile strength to avoid the risk that the cap might come loose even under vibrations.

Max working temperature LT 80° C

Material D6 PP, chemically bonded fiberglass



VAB 0125 D6

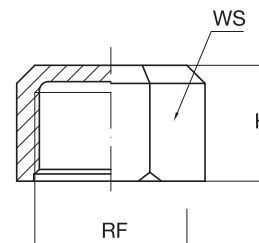
LOCKNUTS

VAE

The VAE blind cap design serves the purpose to close the ends of spray manifolds in surface pre-treatment plants. It is moulded in the same high quality thermoplastic material used for all the other products of the surface pre-treatment range.

Max working temperature LT 80° C

Material D6 PP, chemically bonded fiberglass



Code	RF inch	H mm	WS mm
VAE 1000 D6	1	25	42
VAE 1250 D6	1 1/4	32	52
VAE 1500 D6	1 1/2	32	60