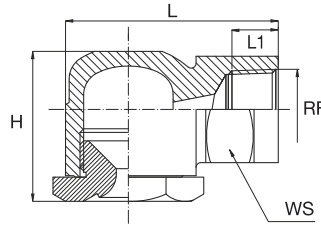


HOLLOW CONE NOZZLES

PN/PO



MOULDED PLASTIC NOZZLES

This range of hollow cone nozzles are made by plastic moulding using top quality glass fiber reinforced polypropylene offering good mechanical strength and dimensional stability. They produce small droplets, uniform distribution and are corrosion resistant. Prices are moderate and are ideal for applications like air humidification, intensive product cooling and gas washing. Together with our pipe clamps, they offer the a good solution in cases where large quantity of nozzles have are required.

Materials D6 Fibreglass reinforced PP
Maximum operating temperature 75° C.

| ∠ | RF | PNS | POS | Code | DE | DU | Capacity at different pressure values | | | | | | | | Dimensions mm | | | | |
|------|------|-----|-----|------|-----|------|---------------------------------------|------|------|------|------|------|------|------|---------------|----|----|----|----|
| | RG | | | | mm | mm | 0.5 | 0.7 | 1.0 | 2.0 | 3.0 | 5.0 | 7.0 | 10 | lpm | H | L | L1 | WS |
| | inch | | | | | | | | | | | | | bar | | | | | |
| 70° | 3/8 | | | 1170 | 2.0 | 2.9 | 0.69 | 0.82 | 0.98 | 1.39 | 1.70 | 2.19 | 2.60 | 3.10 | 31 | 44 | 20 | 22 | |
| 80° | 3/8 | PNT | POT | Code | DE | DU | 0.5 | 0.7 | 1.0 | 2.0 | 3.0 | 5.0 | 7.0 | 10 | H | L | L1 | WS | |
| | | | | 1260 | 2.7 | 3.5 | 1.06 | 1.26 | 1.50 | 2.12 | 2.60 | 3.36 | 3.97 | 4.75 | 31 | 44 | 20 | 22 | |
| 90° | 3/8 | PNU | POU | Code | DE | DU | 0.5 | 0.7 | 1.0 | 2.0 | 3.0 | 5.0 | 7.0 | 10 | H | L | L1 | WS | |
| | | | | 1390 | 3.7 | 3.8 | 1.59 | 1.88 | 2.25 | 3.18 | 3.90 | 5.03 | 5.96 | 7.12 | 31 | 44 | 20 | 22 | |
| | | | | 1670 | 4.4 | 5.2 | 2.74 | 3.24 | 3.87 | 5.47 | 6.70 | 8.65 | 10.2 | 12.2 | | | | | |
| | | | | 1850 | 5.2 | 5.6 | 3.47 | 4.11 | 4.91 | 6.94 | 8.50 | 11.0 | 13.0 | 15.5 | | | | | |
| | | | | 2115 | 6.1 | 6.3 | 4.69 | 5.56 | 6.64 | 9.39 | 11.5 | 14.8 | 17.6 | 21.0 | | | | | |
| | | | | 2220 | 7.2 | 9.2 | 8.98 | 10.6 | 12.7 | 18.0 | 22.0 | 28.4 | 33.6 | 40.2 | | | | | |
| | 1/2 | | | 2320 | 9.5 | 10.5 | 13.1 | 15.5 | 18.5 | 26.1 | 32.0 | 41.3 | 48.9 | 58.4 | 42 | 55 | 35 | 30 | |
| | | | | 2398 | 8.5 | 14.0 | 16.2 | 19.2 | 23.0 | 32.5 | 39.8 | 51.4 | 60.8 | 72.7 | | | | | |
| 130° | 3/8 | PNY | POY | Code | DE | DU | 0.5 | 0.7 | 1.0 | 2.0 | 3.0 | 5.0 | 7.0 | 10 | H | L | L1 | WS | |
| | | | | 1170 | 1.7 | 3.5 | 0.69 | 0.82 | 0.98 | 1.39 | 1.70 | 2.19 | 2.60 | 3.10 | 31 | 44 | 20 | 22 | |
| | | | | 1260 | 1.9 | 5.0 | 1.06 | 1.26 | 1.50 | 2.12 | 2.60 | 3.36 | 3.97 | 4.75 | | | | | |
| | | | | 1390 | 2.7 | 5.0 | 1.59 | 1.88 | 2.25 | 3.18 | 3.90 | 5.03 | 5.96 | 7.12 | | | | | |
| | | | | 1460 | 3.1 | 5.0 | 1.88 | 2.22 | 2.66 | 3.76 | 4.60 | 5.94 | 7.03 | 8.40 | | | | | |
| | | | | 1570 | 3.0 | 7.5 | 2.33 | 2.75 | 3.29 | 4.65 | 5.70 | 7.36 | 8.71 | 10.4 | | | | | |
| | | | | 1670 | 3.4 | 7.5 | 2.74 | 3.24 | 3.87 | 5.47 | 6.70 | 8.65 | 10.2 | 12.2 | | | | | |
| | | | | 1850 | 4.1 | 7.5 | 3.47 | 4.11 | 4.91 | 6.94 | 8.50 | 11.0 | 13.0 | 15.5 | | | | | |
| | | | | 1980 | 3.6 | 12 | 4.00 | 4.73 | 5.66 | 8.00 | 9.80 | 12.7 | 15.0 | 17.9 | | | | | |
| | | | | 2128 | 4.2 | 12 | 5.23 | 6.18 | 7.39 | 10.5 | 12.8 | 16.5 | 19.6 | 23.4 | | | | | |
| | | | | 2208 | 6.0 | 12 | 8.49 | 10.0 | 12.0 | 17.0 | 20.8 | 26.9 | 31.8 | 38.0 | | | | | |
| | | | | 2220 | 6.4 | 12 | 8.98 | 10.6 | 12.7 | 18.0 | 22.0 | 28.4 | 33.6 | 40.2 | | | | | |
| | 1/2 | | | 2129 | 4.3 | 14 | 5.23 | 6.18 | 7.39 | 10.5 | 12.8 | 16.5 | 19.6 | 23.4 | 42 | 55 | 35 | 30 | |
| | | | | 2209 | 5.8 | 14 | 8.49 | 10.0 | 12.0 | 17.0 | 20.8 | 26.9 | 31.8 | 38.0 | | | | | |
| | | | | 2221 | 6.3 | 14 | 8.98 | 10.6 | 12.7 | 18.0 | 22.0 | 28.4 | 33.6 | 40.2 | | | | | |
| | | | | 2320 | 7.6 | 14 | 13.1 | 15.5 | 18.5 | 26.1 | 32.0 | 41.3 | 48.9 | 58.4 | | | | | |
| | | | | 2420 | 9.0 | 14 | 17.1 | 20.3 | 24.2 | 34.3 | 42.0 | 54.2 | 64.2 | 76.7 | | | | | |



PO Male thread nozzles

For all 3/8 size nozzles we can supply PO type nozzles with 3/8 male thread.