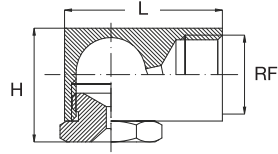


HOLLOW CONE NOZZLES

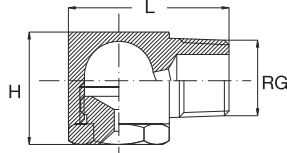
PE/PF



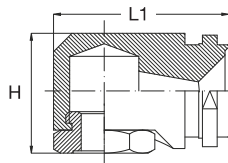
PE



PF



PT



STANDARD ANGLE SPRAY NOZZLES

The principle design is similar to the PA models but can be offered in much smaller flow rates.

This range is produced from bar stock materials and apart from the standard materials shown, they can be manufactured in any special material or alloy that are available in bar stock form.

- Materials**
- B1** AISI 303 Stainless steel
 - B31** AISI 316L Stainless steel
 - T1** Brass

Standard spray angle

50°	RF	PEN	PFN	PTN	Code	DE mm	DU mm	Capacity at different pressure values								Dimensions mm		
	RG							lpm								H	L	L1
	inch							0.5	0.7	1.0	2.0	3.0	5.0	7.0	10			
	3/8				2180	8.0	6.1	7.35	8.69	10.4	14.7	18.0	23.2	27.5	32.9	24	34	35
					2220	7.7	7.0	8.98	10.6	12.7	18.0	22.0	28.4	33.6	40.2			
					2390	9.5	9.0	15.9	18.8	22.5	31.8	39.0	50.3	59.6	71.2			

70°	RF	PES	PFS	PTS	Code	DE	DU	Capacity at different pressure values								H	L	L1
								0.5	0.7	1.0	2.0	3.0	5.0	7.0	10			
1/8					0390	0.9	1.0	0.16	0.19	0.23	0.32	0.39	0.50	0.60	0.71	19	24	26
					0780	1.4	1.7	0.32	0.38	0.45	0.64	0.78	1.01	1.19	1.42			
					1160	2.2	2.1	0.65	0.77	0.92	1.31	1.60	2.07	2.44	2.92			
					1230	2.5	2.7	0.94	1.11	1.33	1.88	2.30	2.97	3.51	4.20			
					1390	3.4	3.1	1.59	1.88	2.25	3.18	3.90	5.03	5.96	7.12			
					1630	4.0	3.9	2.57	3.04	3.64	5.14	6.30	8.13	9.62	11.5			
					1780	4.4	4.4	3.18	3.77	4.50	6.37	7.80	10.1	11.9	14.2			
1/4					0781	1.1	1.6	0.32	0.38	0.45	0.64	0.78	1.01	1.19	1.42	23	32	32
					1161	2.1	2.5	0.65	0.77	0.92	1.31	1.60	2.07	2.44	2.92			
					1231	2.6	2.8	0.94	1.11	1.33	1.88	2.30	2.97	3.51	4.20			
					1391	3.5	3.4	1.59	1.88	2.25	3.18	3.90	5.03	5.96	7.12			
					1631	4.6	4.3	2.57	3.04	3.64	5.14	6.30	8.13	9.62	11.5			
					1781	4.4	4.8	3.18	3.77	4.50	6.37	7.80	10.1	11.9	14.2			
					2117	5.5	5.3	4.78	5.65	6.75	9.55	11.7	15.1	17.9	21.4			
3/8					1392	3.7	3.5	1.59	1.88	2.25	3.18	3.90	5.03	5.96	7.12	24	34	35
					1632	4.5	4.2	2.57	3.04	3.64	5.14	6.30	8.13	9.62	11.5			
					1782	5.0	4.5	3.18	3.77	4.50	6.37	7.80	10.1	11.9	14.2			
					2118	5.8	5.6	4.78	5.65	6.75	9.55	11.7	15.1	17.9	21.4			
					2157	6.7	6.2	6.41	7.58	9.06	12.8	15.7	20.3	24.0	28.7			
					2196	7.5	6.7	8.00	9.47	11.3	16.0	19.6	25.3	29.9	35.8			
					2230	8.3	7.9	9.39	11.1	13.3	18.8	23.0	29.7	35.1	42.0			
1/2					2197	9.5	6.4	8.00	9.47	11.3	16.0	19.6	25.3	29.9	35.8	31	50	50
					2231	9.5	7.5	9.39	11.1	13.3	18.8	23.0	29.7	35.1	42.0			
					2310	9.5	9.0	12.7	15.0	17.9	25.3	31.0	40.0	47.4	56.6			
					2391	9.5	10.5	15.9	18.8	22.5	31.8	39.0	50.3	59.6	71.2			
					2470	10.0	12.0	19.2	22.7	27.1	38.4	47.0	60.7	71.8	85.8			
					2940	13.5	16.5	38.4	45.4	54.3	76.8	94.0	121	144	172			
3/4					2311	9.5	9.0	12.7	15.0	17.9	25.3	31.0	40.0	47.4	56.6	39	55	58
					2392	10.7	9.7	15.9	18.8	22.5	31.8	39.0	50.3	59.6	71.2			
					2471	11.7	10.8	19.2	22.7	27.1	38.4	47.0	60.7	71.8	85.8			
					2550	11.7	12.0	22.5	26.6	31.8	44.9	55.0	71.0	84.0	100			
					2630	12.2	12.0	25.7	30.4	36.4	51.4	63.0	81.3	96.2	115			
					2700	12.7	12.0	28.6	33.8	40.4	57.2	70.0	90.4	107	128			
					2780	12.7	14.0	31.8	37.7	45.0	63.7	78.0	101	119	142			
					2860	12.7	16.1	35.1	41.5	49.7	70.2	86.0	111	131	157			
					2940	13.5	16.5	38.4	45.4	54.3	76.8	94.0	121	144	172			